



Tribal State Collaboration Group - SCRO Data Indicators

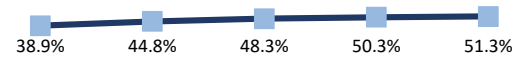
Hope | Leadership | New Opportunities

2020 AN/AI SCRO child population was 21.2%; 2021 AN/AI in OCS OOH care was 51.3%

These are high-level outcomes. To truly understand what is motivating these trends, additional analysis is required.

AN/AI Children in OOH Care

		2017	2018	2019	2020	2021
AN/AI	#	423	482	554	558	608
	%	38.9%	44.8%	48.3%	50.3%	51.3%

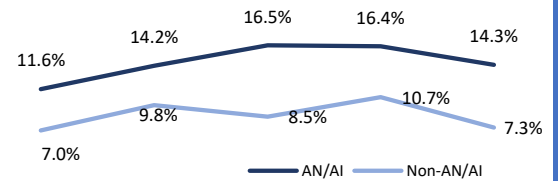


SAFETY

Maltreatment*

		2017	2018	2019	2020	2021
AN/AI	#	250	324	339	451	363
Non-AN/AI	#	299	297	311	365	382

Repeat Maltreatment



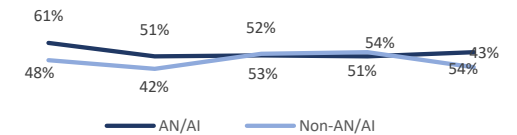
Repeat Maltreatment*

		2017	2018	2019	2020	2021
AN/AI	#	29	46	56	74	52
	%	11.6%	14.2%	16.5%	16.4%	14.3%
Non-AN/AI	#	21	29	27	39	28
	%	7.0%	9.8%	8.5%	10.7%	7.3%

PLACEMENT

Extended Family Placements

		2017	2018	2019	2020	2021
	#	159	163	184	184	234
AN/AI	%	61%	51%	52%	51%	54%
Non-AN/AI	#	169	140	171	168	142
	%	48%	42%	53%	54%	43%



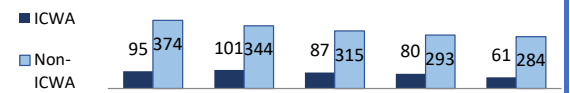
Out of Preference Placements

		2017	2018	2019	2020	2021
AN/AI	#	35	65	80	75	64
	%	13%	21%	22%	22%	17%



ICWA Foster Homes

		2017	2018	2019	2020	2021
ICWA	#	95	101	87	80	61
Non-ICWA	#	374	344	315	293	284



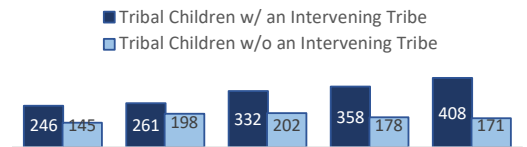
TRIBAL INTERVENTIONS

Tribal Children w/ an Intervening Tribe

	2017	2018	2019	2020	2021
#	246	261	332	358	408
%	63%	57%	62%	67%	70%

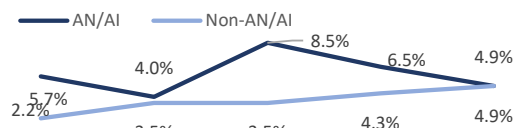
Tribal Children w/o an Intervening Tribe

	2017	2018	2019	2020	2021
#	145	198	202	178	171
%	37%	43%	38%	33%	30%



RE-ENTRY INTO CARE

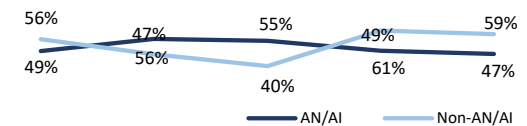
		2017	2018	2019	2020	2021
AN/AI	#	6	8	18	12	10
	%	5.7%	4.0%	8.5%	6.5%	4.9%
Non AN/AI	#	3	6	7	7	9
	%	2.2%	3.5%	3.5%	4.3%	4.9%



PERMANENCY

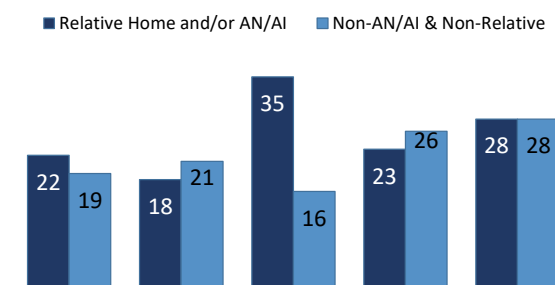
Reunification

		2017	2018	2019	2020	2021
AN/AI	#	64	69	93	76	82
	%	49%	56%	55%	49%	47%
Non-AN/AI	#	139	97	90	101	108
	%	56%	47%	40%	61%	59%



Adoption or Guardianship (# of AN/AI Children Exiting)

		2017	2018	2019	2020	2021
Relative Home and/or AN/AI	#	22	18	35	23	28
	%	17%	15%	21%	15%	16%
Non-AN/AI & Non-Relative	#	19	21	16	26	28
	%	15%	17%	10%	17%	16%
All Guardianships	#	2	9	6	4	8
	%	2%	7%	4%	3%	5%
All Adoptions	#	39	30	45	45	48
	%	30%	24%	27%	29%	28%



Notes:

Example: **2020 AN/AI statewide child population was 27.9%; AN/AI in OCS OOH care was 64.8%**

Interpretation: In 2020 27.9% of the 0-17 **Alaska** child population were AN/AI children; in 2020 64.8% of children in **Statewide** OCS OOH care were AN/AI.

Example: **2020 AN/AI ARO child population was 19.0%; AN/AI in OCS OOH care was 61.2%**

Interpretation: In 2020 19.0% of the 0-17 **ARO** child population were AN/AI children; in 2020 61.2% of children in **ARO** OCS OOH care were AN/AI.

[Alaska Population Estimates](#) are provided by Alaska Department of Labor and Workforce Development.

AN/AI Children in OOH Care represents AN/AI children who were in OOH care sometime during the calendar year, children are considered in OOH care from the date of removal until discharged regardless of placement setting.

***Maltreatment & Repeat Maltreatment:** Numbers/rates may be impacted by data latency.

Maltreatment: count of children with substantiated maltreatment in investigations completed during the reporting period.

Repeat Maltreatment: Repeat victims are those with a previous substantiated allegation within the prior 12 months.

Placement data is point time December 31.

ICWA Foster Homes data is point in time December 31.

Tribal Intervention: Represents the number of children who had an intervention during the reporting year. If intervention occurred after the reporting period it is not included in this number. Children in non-intervening tribes includes all AN/AI children who do not have a tribal affiliation listed in ORCA.

Re-Entry into Care: Children removed from home during the reporting period who have a discharge within the 12 months prior to their most recent reporting period removal date.

Reunification: Total based on number of children discharged with an end reason of reunification and children on a trial home visit over 180 days or expired. 2020 totals may change slightly due to data latency entry.

Children Exiting to Adoption or Guardianship: 2021 totals may change slightly due to data latency entry.

Source: ORCA 2/8/22